

FIN-Project

The innovative aluminium programme
Windows, sliding doors, window walls and front doors

Window and door systems

FINSTRAL[®]





FIN-Project window system	
Quality hallmarks of FIN-Project aluminium windows and doors	4
Nova-line	7
Classic-line	8
Ferro-line	9
Twin-line Nova	10
Twin-line Classic	11
Twin-line Nova Cristal	12
Twin-line Classic Cristal	13
Interior flush windows	14
Frameless transition from glass to masonry	15
Sealed, reliable and recyclable	16
Functions and features of FIN-Project windows	
Colours and surfaces	17
Focus on thermal insulation	18
Glazing types	19
User comfort and security	20
Additional fittings and fixtures	21
Sun protection equipment	22
FIN-Project sliding door systems	
Tilt-and-slide door	24
Sliding door and window Easy-Slide	25
Lift-and-slide door	26
FIN-Project window wall system	
Vista window wall	30
Front doors	
Style model range of front doors	32
Elegance model range of front doors	33
Ceramica model range of front doors	34
Vetro model range of front doors	35

Quality hallmarks of FIN-Project aluminium windows and doors

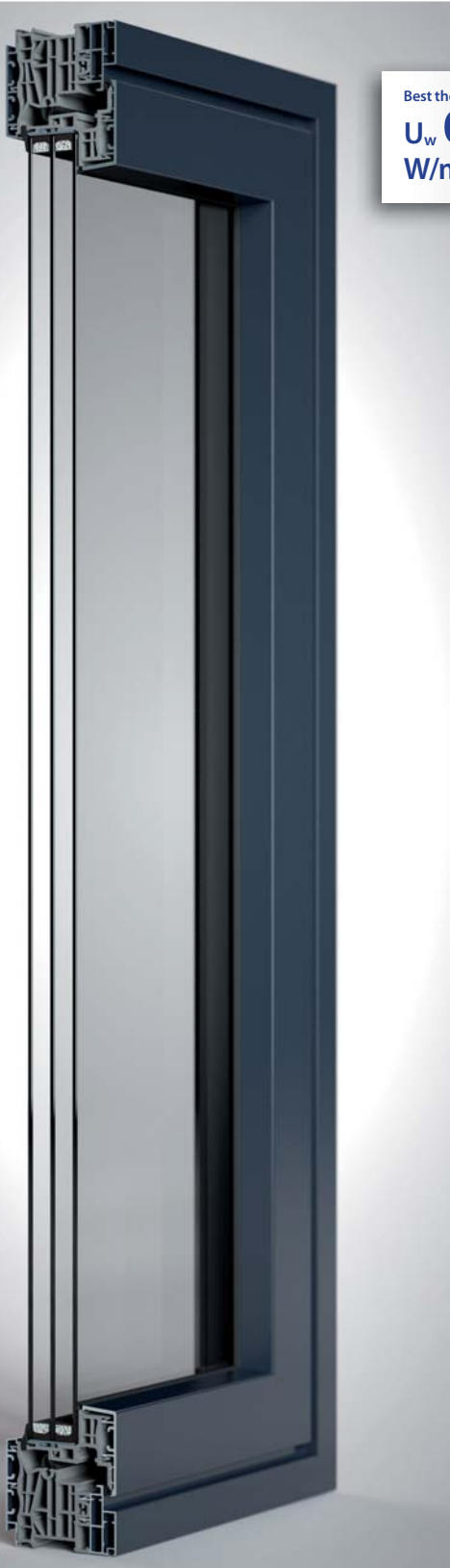
4

Compelling benefits

FIN-Project products combine proven FINSTRAL window technology with the material advantages of aluminium on the inside and outside, encasing a multi-cham-

bered PVC core profile. Narrow profiles characterise the elegant aluminium design of FIN-Project. Innovative system details ensure outstanding thermal insulation, sound

protection, tightness, ease of opening and security.



Best thermal insulation value

U_w **0.82**
W/m²K

1. Excellent thermal insulation

FIN-Project aluminium windows and doors provide excellent thermal insulation. Innovative multi-chambered PVC profiles with central sealing, thermally-optimised glass spacers and triple glazing guarantee thermal insulation values of up to U_w 0.80 W/m²K.

2. Elegant aluminium design

FIN-Project elements consist of a sealed, insulating PVC frame at the core, solidly joined both inside and outside with high-quality aluminium. Narrow profiles ensure maximum light incidence, while the aluminium cladding offers numerous possibilities for colour and surface design.

3. Long-term functional reliability

The standard peripheral bonding of the sash frame with the glass pane ensures high angular stability and torsion resistance of the sash, important for its long-term functional reliability. Special adhesive technology contributes to the narrow profile appearance, high thermal insulation and protection against break-ins.

4. Large choice of product variants

Seven sash variants are available to meet your aesthetic and structural requirements. All models feature slim internal contours without glazing beads or jointing. For a particularly attractive contemporary finish, a flush interior execution is available, as well as an installation option to conceal the exterior frame.

5. Wind and weatherproof

Equipped with a centre seal, FIN-Project windows and doors are designed and manufactured to meet the most demanding requirements, including extreme weather conditions. Welded profile corner joints and the firm fit of the seals in the frame optimises both air and water tightness.

Best thermal insulation value

U_w **0.80**
W/m²K

6. Superior sound insulation

FIN-project aluminium windows and doors excel in tightness and stability. The standard execution of FINSTRAL aluminium products offers an excellent sound insulation value of R_w 38 dB. Values of up to R_w 44 dB are achieved through the use of heavy, flexible glazing and composite sashes.

7. State of the art security features

The FIN-Project window configuration already includes several elements that help ensure longevity while making windows and doors difficult to prise open, such as high-quality security fittings and all-round bolts, hinges with a load-bearing capacity of 130 kg and bonded panes. Laminated safety glass protects against break-ins and the risk of injury.

8. Efficient solar and heat protection

Rooms with a high proportion of glazing remain cooler for longer with special Sun-Control and Sun-Block solar protection glass. These glazing variants capture the bulk of the impacting solar energy yet at the same time provide high thermal insulation. Twin-line Nova or Twin-line Classic aluminium composite windows with integrated, weather-proof blinds between the panes are recommended for the individual adjustment of light and energy incidence.

9. Can be combined with FIN-Project Vista window walls and aluminium conservatories

Vista window walls with their large sliding doors and aluminium conservatories are ideal for use in large-scale glazing projects and glazed extensions. All window walls and glazed extension systems are based on the same design principle with the insulating PVC core frame encased inside and outside by aluminium profiles.

10. Tested, certified quality

The FINSTRAL brand mark, underpinned by product tests from independent certification institutes, stands for the all-round quality of FINSTRAL products: from selection and testing of high quality materials, to bespoke production processes and professional fitting, as well as reliable service and dependable warranties.



Cross-section of FIN-Project Classic-line



Nova-line

Maximum glazed surface and excellent thermal insulation



FIN-Project window system



This range is characterised by the elegant, restrained aluminium design with its slender profile widths. Barely visible from the outside, the sash creates a large glazed surface for optimum light incidence in the living area. No glazing bead joints disrupt the sleek interior lines. The symmetrical appearance of the combination of fixed glazing and casement contributes to the harmonious overall impression of the

façade. The modern look of Nova-line aluminium windows is the ideal solution for sophisticated, contemporary buildings. The use of innovative multi-chambered PVC profiles with centre seals ensures excellent frame insulation values of $U_f 1.0 \text{ W/m}^2\text{K}$. Optional double or triple glazing guarantees an excellent U_w value of $1.2 \text{ W/m}^2\text{K}$ or $0.82 \text{ W/m}^2\text{K}$.

Best thermal insulation value

$U_w 0.82$
 $\text{W/m}^2\text{K}$

Classic-line

8 Traditional, elegant appearance



This range lends the building a traditional, timeless aesthetic, with a slender, restrained appearance of the profiles both outside and inside the window. The outer sash measures just 26 mm, while the internal straight-line proportions are emphasised by the absence of glazing beads. The Classic-line also offers excellent thermal insulation, with the innovative multi-

chambered PVC profiles ensuring a frame insulation value of $U_f 1.2 \text{ W/m}^2\text{K}$. Optional double or triple glazing guarantees an excellent U_w value of $1.2 \text{ W/m}^2\text{K}$ or $0.80 \text{ W/m}^2\text{K}$.

Best thermal insulation value

U_w **0.80**
 $\text{W/m}^2\text{K}$

Ferro-line

Classically slender steel window look



FIN-Project window system

The delicate steel appearance of the Ferro-line variant preserves the aesthetics of the classic steel window, making it suitable for renovating old steel windows as well as for modern buildings. The excellent thermal insulation of the FIN-Project window and door system means that the Ferro-line offers a U_w value of up to $0.80 \text{ W/m}^2\text{K}$. The Ferro-line casement has an outer visible

width of just 26 mm and a distinctively angled external outline: the elegantly narrow inner contour requires no glazing beads. The frame insulation rating of $U_f 1.1 \text{ W/m}^2\text{K}$ gives double-glazed windows ($U_g 1.1 \text{ W/m}^2\text{K}$) a very good U_w value of $1.2 \text{ W/m}^2\text{K}$, while triple glazing ($U_g 0.5 \text{ W/m}^2\text{K}$) gives an excellent U_w value of $0.80 \text{ W/m}^2\text{K}$.



Best thermal insulation value
 $U_w 0.80$
 $\text{W/m}^2\text{K}$

Twin-line Nova

10

The aluminium multifunctional window with integrated blind



A simple, timeless design combined with the added value of a composite casement. The all-round protection of the Twin-line Nova reduces energy costs and noise throughout the year while providing a feeling of comfort and space. The sash, frameless on the outside, maximises the glazing surface and light incidence. The combination of fixed glazing and casement creates a modern, symmetrical exterior that completes the harmonious overall impression

of the façade. The large spaces between the panes and the third Bodysafe pane (4 mm ESG) in the composite casement both ensure excellent sound insulation. The blind, fitted in the weatherproof space between the panes, allows interior light and shade to be adjusted to individual preferences. The composite sash can be opened to allow easy cleaning and maintenance. The blind has no requirement for a housing, thus permitting larger window dimensions.

Best thermal insulation value

U_w **0.90**
W/m²K

Twin-line Classic

Multifunctionality at its finest



FIN-Project window system



Flush window design is here combined with all the comforts of composite glazing. The blind is fitted in the weatherproof space between the panes for easy cleaning and low maintenance. Interior light and shade can be adjusted based on individual preferences. The blind has no requirement for a housing, thus permitting larger window dimensions.

The innovative frame construction, featuring multi-chambered PVC profiles at its core, ensures excellent thermal insulation. The inner insulation glass can be triple-glazed for even greater energy efficiency. The three peripheral seals, large cavities between the glazing and optional sound protection glass all contribute to the excellent acoustic insulation.

Best thermal insulation value

U_w **0.92**
W/m²K

Twin-line Nova Cristal

12 Crystal-clear prospects, optimal functionality



This high-quality all-glass window features a sash frame completely covered by glazing, both outside and inside. The exterior frameless appearance creates a flush, elegant glass front. On the inside, the frameless contours and all-glass surfaces create a reduced, clear design. The absence of frame edges makes maintenance and cleaning a straightforward task. A total of nine colours offers ample choice for enamelling the edges of the glass.

Best thermal insulation value

U_w **0.98**
W/m²K

The Cristal window with its composite casement offers integrated sun and privacy protection: The blind, fitted in the weatherproof space between the panes, ensures optimal interior light conditions. Cristal combines innovative, modern aesthetics with excellent thermal insulation (U_w 0.98 W/m²K) and outstanding sound insulation (41 dB).



Twin-line Classic Cristal

Flush appearance on the outside, all-glass surface on the inside



The Twin-line Classic Cristal variant of aluminium all-glass windows features an exterior visible, flush aluminium sash profile. On the inside, it offers an entirely glazed surface and frameless contours. A choice of nine colours is available for enamelling the edges of the inner glass.

This window, too, offers all the comforts of the composite casement. The integrated venetian blind, protected from wind and weather, ensures optimal privacy and sun protection while permitting interior light and shade to be adjusted to individual preferences. Twin-line Classic Cristal combines modern aesthetics with an outstanding thermal insulation value of $U_w 1.0 \text{ W/m}^2\text{K}$.

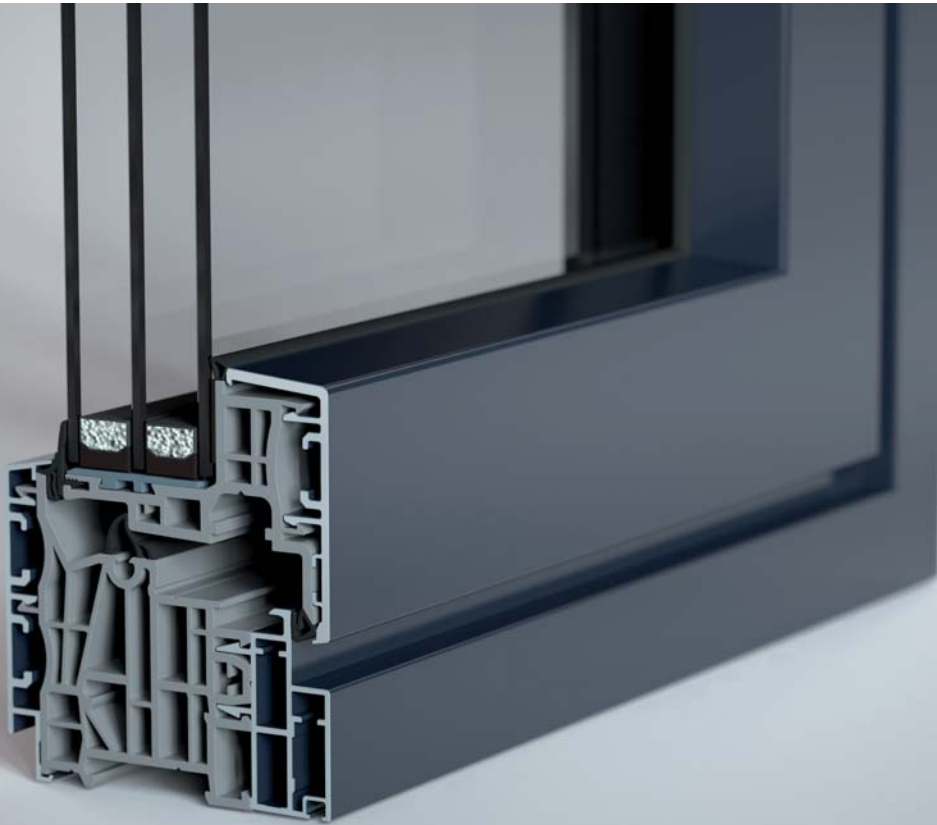
Best thermal insulation value

$U_w 1.0$
 $\text{W/m}^2\text{K}$



Interior flush windows

For a clear, continuous appearance

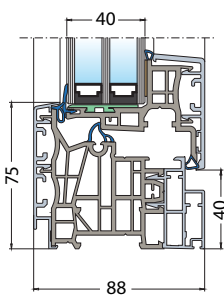


The interior flush window has a particularly smooth and modern appearance. This execution is compatible with all sash variants and requires the use of concealed

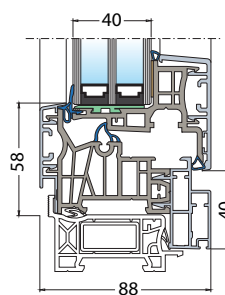
hinges. When combined with the Twin-line composite variants, there remains a surface recess of 6 mm between sash and frame profiles. As a further option, the window

frame can be concealed on the outside using reveal beads (see page 15).

Window frame flush with sash profile on interior

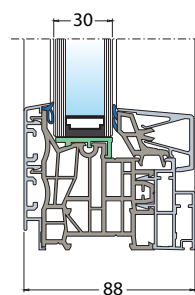


Window frame 75 mm

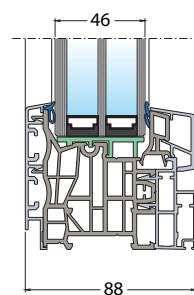


Window frame

Flush glazing beads for fixed windows



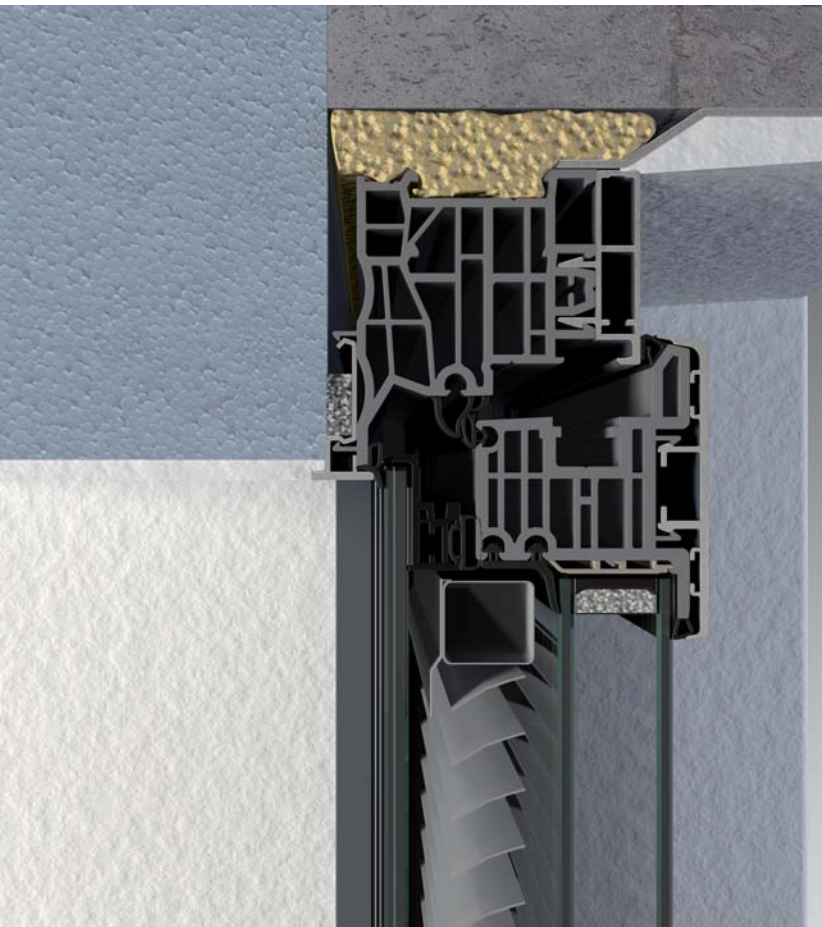
Window frame F1Z with 30 mm glazing bead



Window frame F1Z with 46 mm glazing bead

Frameless transition from glass to masonry

Exterior concealed frames



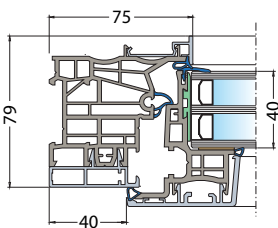
FIN-Project window system

FIN-Project windows and doors can be installed with concealed outer frames, creating an impression of transparent lightness. The outside frame is completely covered by the building's thermal insulation system up to the reveal bead on the sides

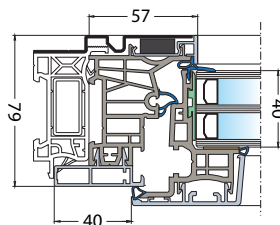
and top. This ensures an ideal isothermal flow once installed, eliminating any risk of thermal bridges. The invisible external frame can be installed with all sash variants. Particularly interesting is the combination with the Twin-line Nova range: there is no

need for separate external solar protection as this is integrated into the composite window, making large, frameless glazing surfaces possible.

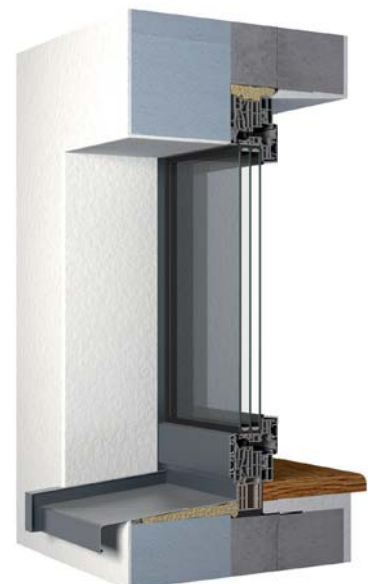
Frame with recessed sash and reveal bead on sides and top



Window frame 75 mm



Window frame

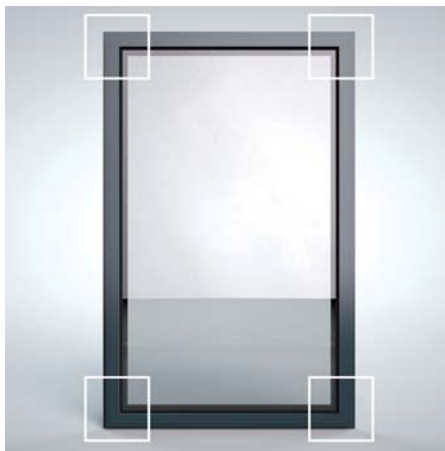
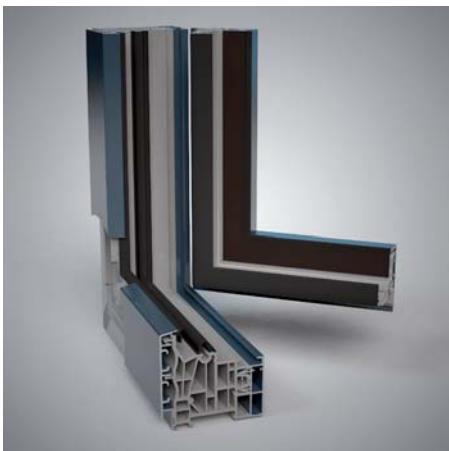


Sealed, reliable and recyclable

Long-lasting doors and windows

Featuring a centre seal, FIN-Project windows and doors are designed and built to withstand extreme weather conditions. The welded corner joints of seals and PVC frame and sash profiles contribute to excellent air tightness and resistance to driving rain. The centre seal prevents moisture and dirt from reaching the fittings. It is co-extruded to the air and watertight seal fillet and protected against weathering to ensure long service life. The sash stop seal is

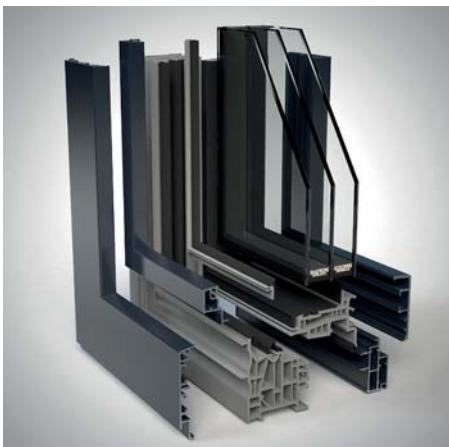
fused to the sash profile and is also air and moisture-tight in the corners, thus preventing damp room air from entering the profile bead. The surrounding self-adjusting roller mushroom bolts press the sash against the frame to ensure all-round constant pressure on the seals. For aesthetic purposes, the frame drainage system, which safely removes any water potentially penetrating from outside, lies concealed.



Functionally reliable and long-lasting

A standard feature, the sash frames of FIN-Project windows and doors are peripherally bonded to the glass, providing excellent angular stability and torsion resistance. Windows and doors thus continue to function reliably after many years of use. FIN-

Project adhesive technology contributes to the narrow profile appearance, high level of thermal insulation and protection against break-ins.



Recyclable

FIN-Project elements are designed such that windows can be removed and neatly disassembled into their component parts. PVC and aluminium can then undergo separate recycling processes.

PVC profile cut-offs from the manufacturing process are crushed on-site then recycled. FINSTRAL makes great efforts to comply with current environmental requirements: certified since 1999 to DIN EN ISO 14001 for its environmental management system, the company actively engages in a process of continuous improvement.

Colours and surfaces

Multiple possibilities for individual design options

Aluminium profiles are especially easy to maintain as they are largely self-cleaning. Multiple, individual design options are possible with an extensive range of colours

and surfaces:

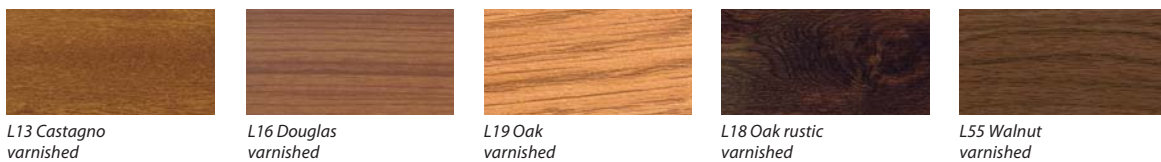
- wide range of standard colours, including lacquered wood structure surfaces
- special colours with metallic effect

- numerous powder-coated RAL colours
- different colours possible for interior and exterior

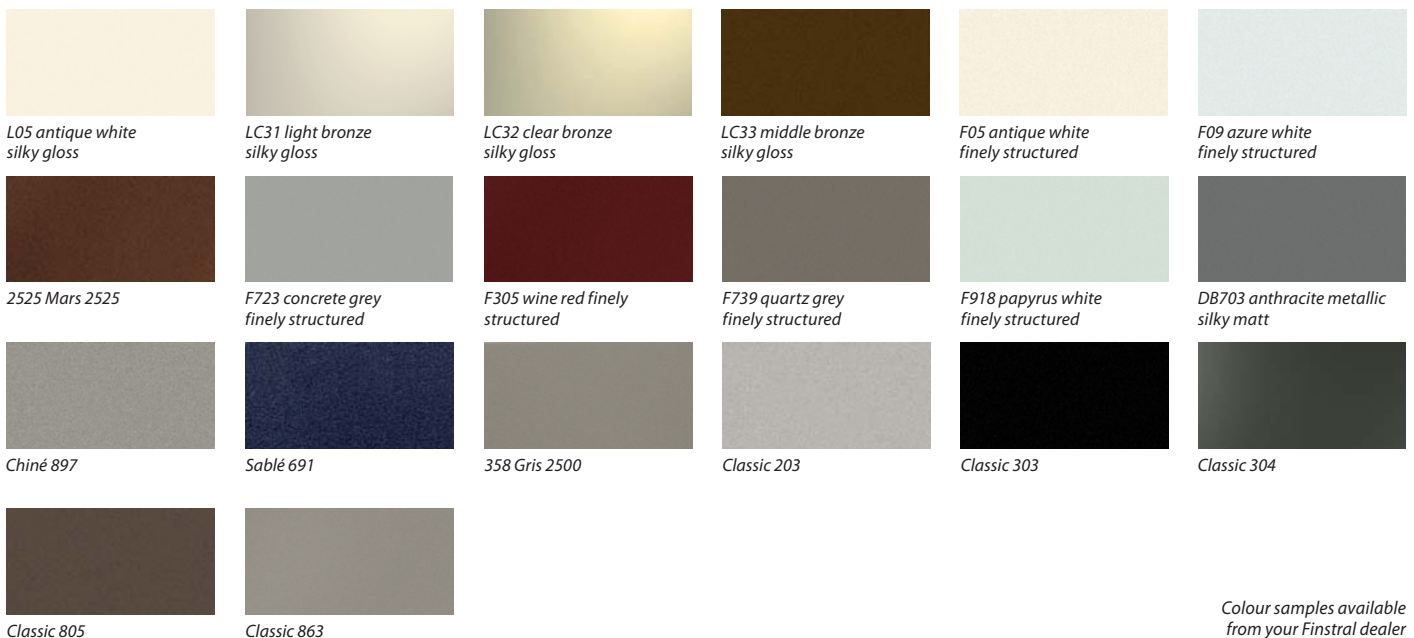
Aluminium standard colours



Wood decors



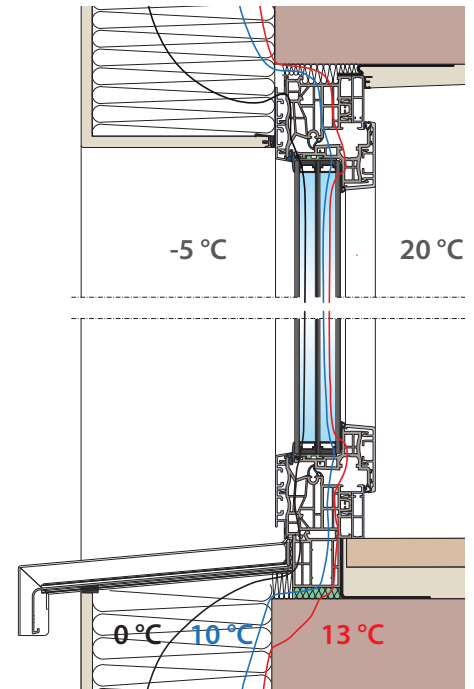
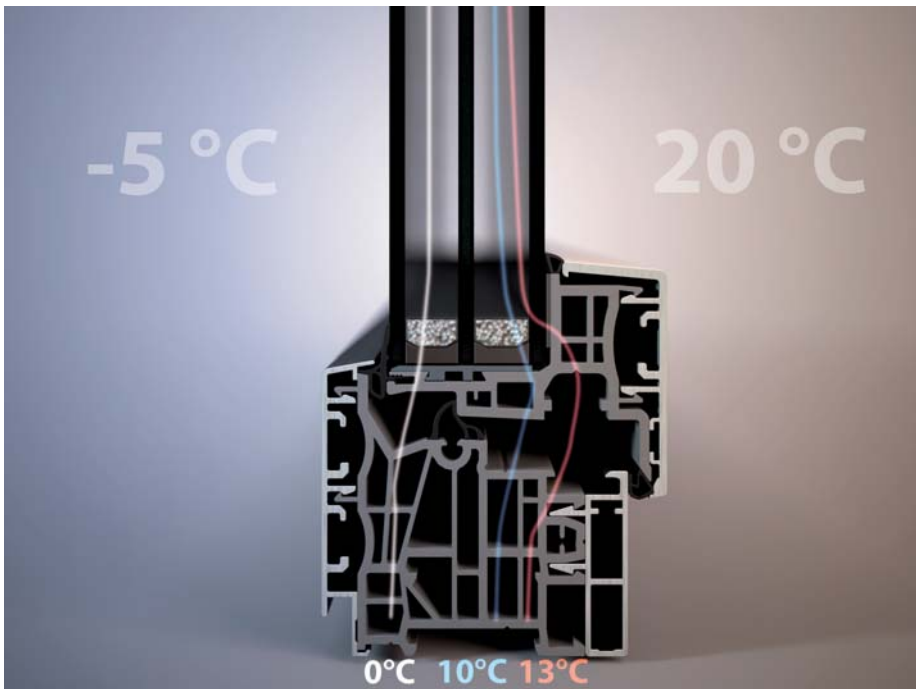
Aluminium special coatings



Colour samples available from your Finstral dealer

Focus on thermal insulation

18 Excellent heat insulation values up to U_w 0.80 W/m²K



FINSTRAL's FIN-Project system leads the way in aluminium window construction. A process of constant development has enabled the successful combination of two tried and tested materials: together, the insulating properties of the PVC core and the advantages of high-quality, low-maintenance aluminium surface profiles create

an innovative product that increases comfort in a sustainable, energy-efficient way. The defining feature of FIN-Project windows and doors is their excellent thermal insulation. The innovative multi-chambered PVC profiles with their central seal guarantee U_w values of up to 0.80 W/m²k. Once installed, the isothermal flow is ideal,

eliminating any risk of thermal bridges. Insulating construction joints, insulated window sills and the standardised use of thermally optimised glass spacers all contribute to the excellent thermal properties of the FIN-Project system.

	Frame insulation value	Applicable glass thickness	Double glazing	Triple glazing				
			U_g 1.1	U_g 0.9	U_g 0.8	U_g 0.7	U_g 0.6	U_g 0.5
Nova-line	U_f 1.0	30 and 40 mm	U_w 1.2	U_w 1.0	U_w 0.97	U_w 0.90	U_w 0.82	
Classic-line	U_f 1.2	30 and 48 mm	U_w 1.2	U_w 1.1	U_w 1.0	U_w 0.95	U_w 0.87	U_w 0.80
Ferro-line	U_f 1.2	30 and 48 mm	U_w 1.2	U_w 1.1	U_w 1.0	U_w 0.95	U_w 0.87	U_w 0.80
Twin-line Nova		28 + 4 and 32 + 4 mm	U_w 1.1		U_w 0.90			
Twin-line Classic		28 + 4 and 32 + 4 mm	U_w 1.1		U_w 0.92			
Twin-line Nova Cristal		39 + 4 mm	-	U_w 0.98				
Twin-line Classic Cristal		39 + 4 mm	-	U_w 1.0				

All U values are given in in W/m²K. U_w values according to EN ISO 10077-1:2006 for single sash windows with a reference size of 1.23 x 1.48 metres according to product norm EN 14351-1+A1:2010

Glazing types

Increased benefits with the right type of glass

The state of the art FINSTRAL insulating glass variants meet a wide range of planning requirements. Plus-Valor, Super-Valor and Energy-Valor offer excellent thermal insulation values. Sun-Control, Sun-Block and

Sun-Block 3 provide high solar protection. As standard, all insulating glass types are equipped with thermally optimised black glass spacers. Such spacers improve thermal insulation at the edge of the glass and

reduce condensation in adverse temperature and humidity conditions.

Plus-Valor – quality standard



Plus-Valor, our standard product, is thermally insulating glazing manufactured with two panes. One pane has a thermal protection layer, while the space between the panes is filled with argon gas.

Thermal insulation: U_g 1.1 W/m²K
Energy gain: g value 64 %
Light transmittance: LT value 81 %

Sun-Control – gentle solar protection



Sun-Control is absorbent solar protection glass that stores energy in the outer pane, slowly releasing the heat outwards. The glass is neutral in colour and has low reflectivity. It is ideal for glazing in Mediterranean locations and for larger window surfaces. The outer pane is of Bodysafe glass as standard.

Thermal insulation: U_g 1.1 W/m²K
Energy gain: g value 41 %
Light transmittance: LT value 69 %

Super-Valor – maximum thermal insulation



Super-Valor glass is triple glazing with two thermal protection layers for excellent insulation. In winter, Super-Valor glass provides outstanding protection against loss of heat, while in summer it maintains cool room-side temperatures.

Thermal insulation: U_g 0.6 W/m²K
Energy gain: g value 54 %
Light transmittance: LT value 74 %

Sun-Block – strong solar protection



Sun-Block solar protection glass emits most of the sun's heat impacting on the exterior pane. Slightly reflective from outside, it offers neutral transparency from the inside. It is the ideal glass for window areas that are highly exposed to the sun and for large glazing areas. The outer pane is of Bodysafe glass as standard.

Thermal insulation: U_g 1.1 W/m²K
Energy gain: g value 28 %
Light transmittance: LT value 60 %

Energy-Valor – maximum thermal insulation and energy gain



Energy-Valor is triple heat insulating glazing that lets in large quantities of solar energy while providing excellent thermal insulation and savings in heating costs. A favourite for colder regions.

Thermal insulation: U_g 0.6 W/m²K
Energy gain: g value 62 %
Light transmittance: LT value 73 %

Sun-Block 3 – maximum solar protection and excellent thermal insulation



Sun-Block 3 is a triple insulating glazing offering both excellent solar protection and maximum thermal insulation. It is ideal for window surfaces that are highly exposed to the sun and for large glazing areas, especially for buildings in colder regions or with air-conditioned rooms.

Thermal insulation: U_g 0.6 W/m²K
Energy gain: g value 26 %
Light transmittance: LT value 54 %

All FINSTRAL glass types can be combined with Bodysafe (toughened glass, ESG) and Multiprotect (laminated glass, VSG) safety glazing to complement the comfort advantages of insulating glass.

Bodysafe – injury-proof glazing



Bodysafe is a toughened glass (ESG) with maximum resistance to mechanical impact. It breaks into small blunt pieces rather than splintering, thus minimising the risk of injury. This is not its only advantage: normal glass may be affected by a heat gap in the case of a drop shadow or dark objects

placed behind the glass, while toughened glazing resists such high temperature differences in the glass.

Multiprotect – highly resistant, versatile protection

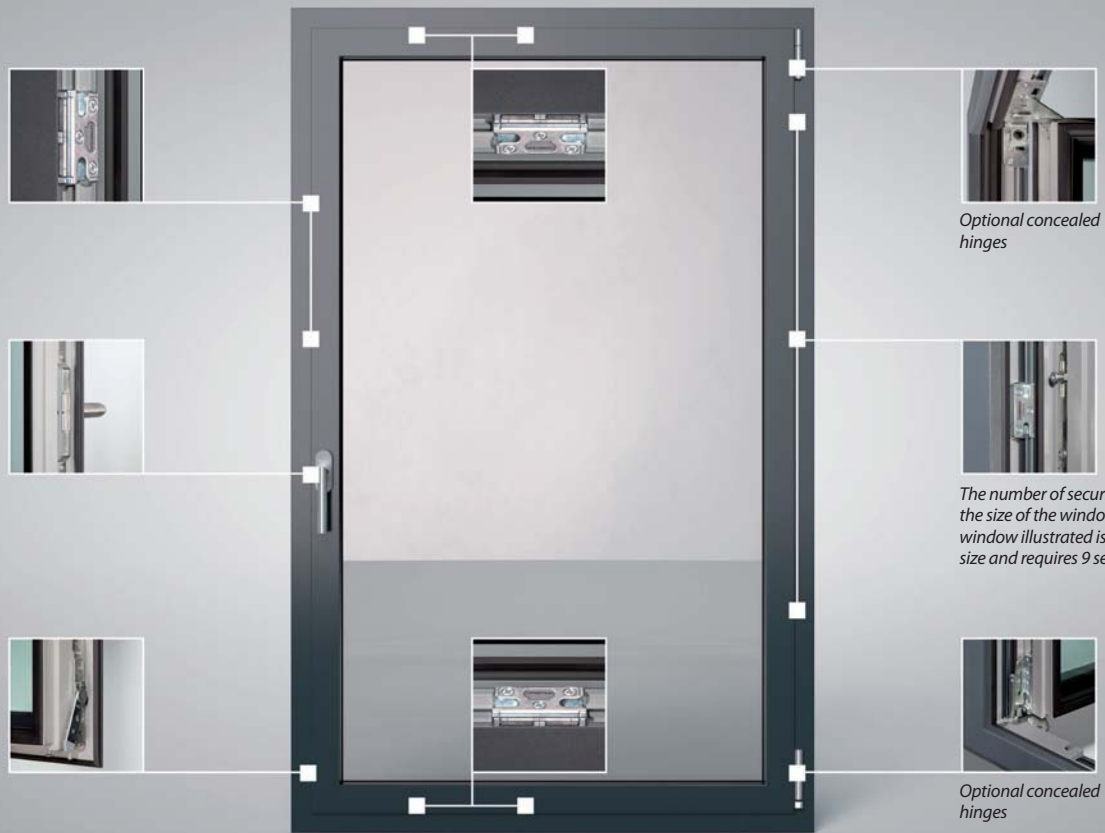


Multiprotect (VSG) glazing consists of two panes bonded together by a highly tear-resistant foil. If the glass breaks the foil captures the shards, thus greatly reducing the risk of injury. Its high stability also makes the glass resistant to break-ins and reduces the risk of falls. Other advantages include

its excellent sound insulation and complete protection of interior surfaces against UV radiation.

User comfort and security

20 Smooth-running, quality-tested openings



High-quality standard equipment of tilt-and-turn fittings

- The standard hardware consists of hinges with a load-bearing capacity of 130 kg.
- As an option, window hinges can be concealed.
- Security bolt points are a maximum distance of 700 mm apart: windows are difficult to prise open.

- Self-adjusting roller mushroom bolts minimise maintenance, ensure smooth operation and make windows difficult to prise open.
- The integrated sash lifter, fitted as standard, means sash fits into the correct closed position even after years of operation and supports the transfer of the glass weight to the frame in both tilted and closed positions.

- The failsafe device, fitted as standard, prevents handle movement if window is open or tilted.
- Tilt impact damping and opening restrictor complete the standard fittings

Window handles

Ergonomic and functional, the various window handles provided by FINSTRAL offer user-friendly operation of windows and doors. The range includes different models, available on request as an enhanced safety version with a push-button or key.



Aluminium handle satin-finished (standard handle)



Aluminium handle satin-finished lockable



Stainless steel handle



Brass handle with grey chromed satin-finish

Additional fittings and fixtures

The right function for every need



Concealed hinges

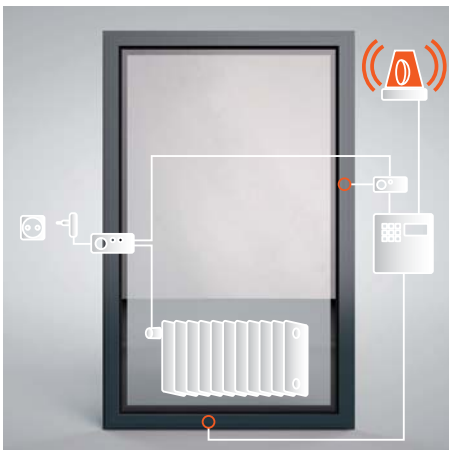
FIN-Project windows can be equipped with concealed hinges with a load-bearing capacity of up to 130 kg. For interior flush windows, concealed hinges are required.

Summer-winter tilt opening

With this fixture, a simple manual operation suffices to change the tilt opening from normal to reduced mode, making for significant energy savings in winter.

Tilt-before-turn operation

In this version the window is tilted by means of a horizontal grip and turned by means of a vertical grip. The window can only be turned open by use of a key, thus reducing the risk of falls and increasing child safety, while limiting the opening of windows in schools, hospitals and similar.



Magnetic contact

The magnetic contact on the window serves to save energy and reduce the risk of break-ins: it recognises when the glazing is closed, open or tilted and transmits this information to the heating, air-conditioning or alarm systems.

Tilt opening

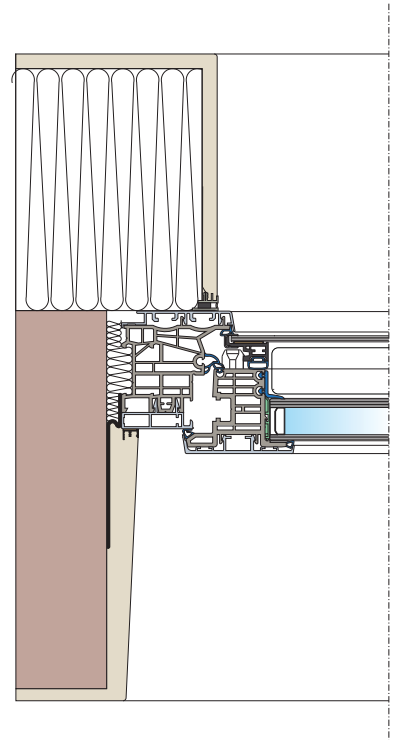
This opening position is particularly recommended for skylights and very wide windows. Hard-to-reach skylights can be operated via a lever arrangement, crank mechanism or motor drive.

Lockable door with double handle

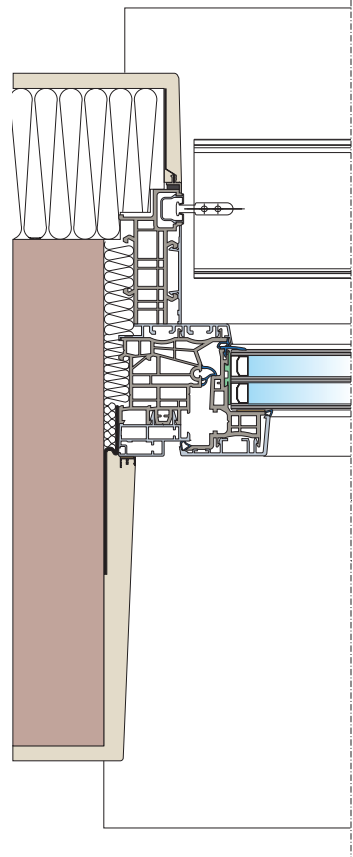
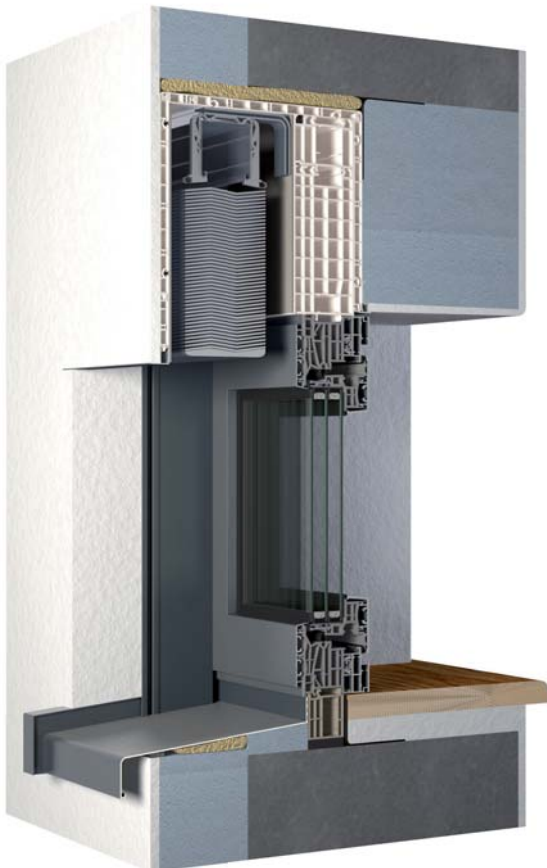
These doors with their robust fitting bands are designed with turn or tilt-and-turn openings for sash weights of up to 130 kg. Lockable doors with a double handle are available with the Nova-line sash variant.

Sun protection equipment

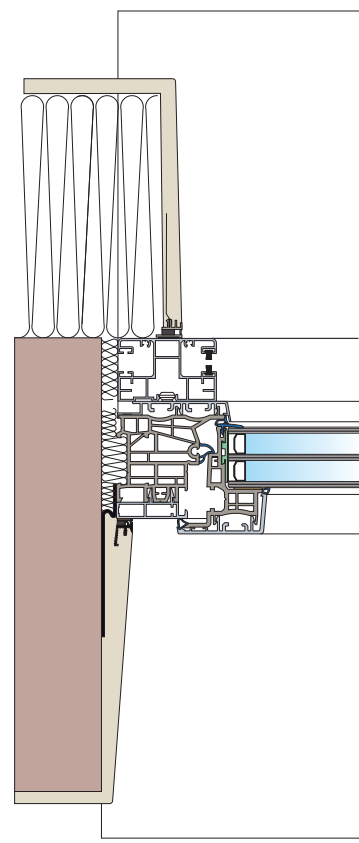
22 Twin-line Nova composite sash with integrated blinds



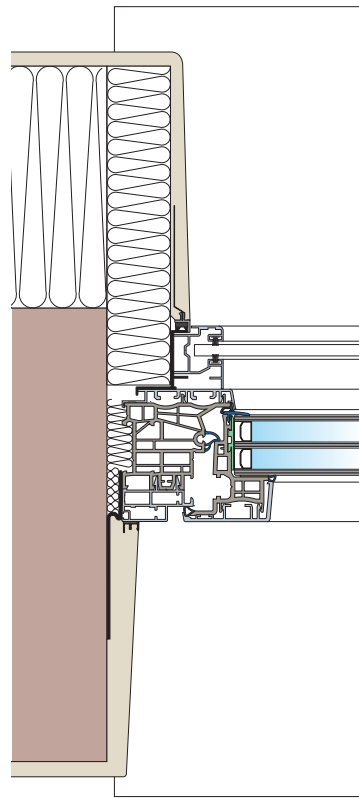
Exterior venetian blinds



Roller blind fitted above glazing with maintenance from below



Roller blind fitted in front of glazing



Tilt-and-slide door

24

Comfort variant with integrated gap ventilation or standard variant with tilting ventilation



FIN-Project Comfort tilt-and-slide doors feature an automatic “comfort-soft” movement of the sash into the frame: with a single movement, the sliding door is unlocked

and comfortably moved into the sliding position. The energy used is then stored so that the sash automatically fits snugly into closed position following manual sliding.

The surrounding gap ventilation allows premises to be ventilated without reducing security against break-ins.

The standard version of the tilt-and-slide door is on the other hand equipped with convenient tilting ventilation, making this door especially suitable for private residential use.



Comfort tilt-and-slide door with flat threshold



Aluminium handle (standard handle) and brass handle with grey chromed satin-finish (right)

Sliding door and window Easy-Slide

Smooth opening, sophisticated design



The new Easy-Slide sliding door is not just smooth in operation but also offers fine aesthetic qualities. The slender profile widths create an elegant glass architecture: the Nova-line sash interior is

restrained, with slim contours to create greater transparency. The frame is barely visible from the outside, maximising the glazed surface and light incidence in the living area. Concealed fittings complement

the harmonious, delicate overall impression. With its flat threshold (just 26 mm) this sliding door guarantees ease of access from the inside to the outside.

The Easy-Slide system is also particularly suitable for sliding windows, not least because of its slender profile widths. With Easy-slide windows, the sash does not protrude into the room when opened, thus window sills or kitchen countertops do not need to be cleared beforehand. For a thoroughly modern look, we offer the Easy-Slide Cristal variant, featuring an outside sliding sash.



Easy-Slide sliding door with 26 mm flat threshold



Aluminium handle (standard handle) and brass handle with grey chromed satin-finish (right)

Lift-and-slide door

26

Large openings for barrier-free living



Aluminium FINSTRAL lift-and-slide doors render possible large glazed areas with high light incidence, leading to a new sense of space. They are especially user-friendly: even very large doors open

and close with ease. The extremely flat threshold reduces the risk of tripping and difficult-to-cross height differences.

Advantages at a glance:

- smooth sliding system
- simple and user-friendly manual operating mechanism
- extremely flat floor threshold
- large glass surfaces create a sense of open living



Thermally insulated, flat threshold



Aluminium handle (standard handle)



Stainless steel handle and brass handle with grey chromed satin finish (right)



FIN-Project
sliding door systems





Vista window wall

30

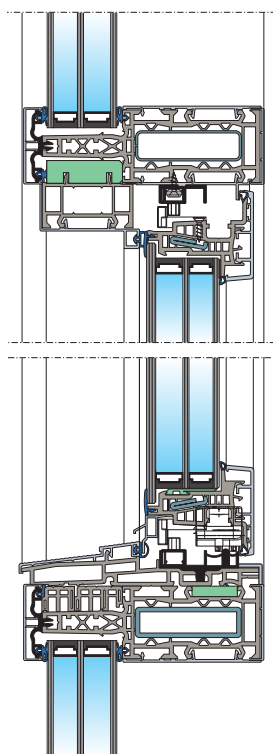
Large window walls, fitted with smooth-running lift-and-slide doors



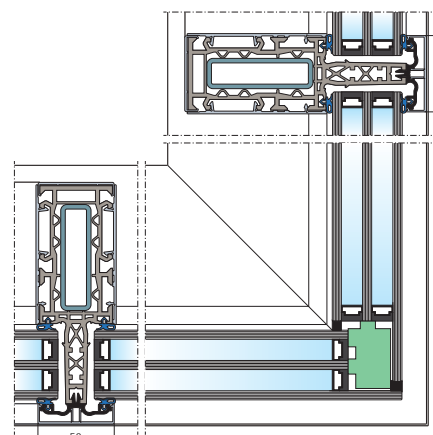
An ingenious, flexible system for innovative opening solutions: here, the large Vista window walls are combined with lift-and-slide doors (sash widths up to 2.5 metres). Resembling a mullion-transom façade, this structure features particularly narrow frame widths of 50 mm. Vista window wall design is based on thermally insulated, steel-reinforced PVC profiles with aluminium cladding on both sides. The Vista window wall can on request have different inside and outside colour schemes.



In addition to lift-and-slide doors with a flat floor threshold, FINSTRAL Easy-Slide sliding doors, tilt-and-turn windows and doors and front doors can be used as openings: the modular Vista window wall maintains an overall harmonious impression. The high-quality glazing options, available in glass thicknesses of 30 and 46 mm, offer very good insulation values of up to U_g 0.6 W/m²K.



The Easy-Slide sliding window can also be integrated into the Vista window wall.



Glass corner optional

Style model range of front doors

Clear Design



Model 01 external view



Model 20 external view



Model 54 external view

Surface and texture accent the minimalist design of the Style models, making them ideal elements for contemporary architecture. This door is characterised by flush panels that clad the door leaf on both sides, emphasising its minimalist look and providing even better thermal insulation. The door's exterior and interior can feature different colours, if desired.

Colours and handles are perfectly matched. Brushed aluminium inserts can be used to harmoniously divide up the modern form of the door.

High-quality door panels also guarantee excellent security. This range is also available with concealed hinges.



Model 01 internal view

Doors with flush exterior and interior

These doors are distinguished by the flush panels that clad the door leaf on both sides, producing an impressively clear design and linear look. Innovative system details offer excellent performance in terms of thermal insulation, function and ease of use.

The four model ranges are distinguished by the use of different materials for the panels:

- Style range with aluminium panels
- Elegance range with synthetic resin panels
- Ceramica range with ceramic panels
- Vetro range with enamelled glass panels

Elegance model range of front doors

Simplicity and vitality



Model 01 colour H01



Model 01 colour H06



Model 21 colour H02

The monolithic design is a clear statement of aesthetic simplicity and a return to the elementary. Its organically structured synthetic resin surfaces give the Elegance range a graceful vitality notwithstanding its reduced forms.

To emphasise the creative harmony of Elegance we recommend you choose an appropriately minimalist handle from the FINSTRAL range of fittings. There is a choice of clear glass, satin-finished glass or various attractive panels for the side elements.

Quality features in detail

- The innovative construction ensures the door's high angular stability, torsion resistance and long-term functional reliability.
- The leaf has a thickness of 76 mm, offering very good thermal insulation properties with an U_p -value of 0.5 to 0.7 W/m^2K .
- The swivel bolt fitting with visible front door hinges, fitted as standard, ensures good basic protection against break-ins.
- The front door can on request be equipped with additional fittings to meet security levels from P2A to P5A.



Model 01 Internal view

Ceramica model range of front doors

Animated surfaces



Model C01 external view



Model C02 external view



Model C04 external view

The outer surfaces of these doors consist of ceramic plates for façade constructions. Unlike synthetic resin panels, the pattern is not printed onto the surface but rather derived from the composition and glaze

of the ceramic, resulting in surfaces of unparalleled depth. The tactile surfaces of Ceramica doors interact to light, creating gentle reflections. Ceramica panels are colour-fast and weather-resistant.



Model C01 internal view

Thermal insulation values according to EN ISO 10077-1:2006

doors with flush exterior and interior panels	U_D [W/m ² K]*
with glass insert	1.1
without glass insert	0.99

*The U_D -values refer to an aluminium door with measurements of 1.23 x 2.18 m and are indicative until testing is complete.

Vetro model range of front doors

Reflection as the avant-garde



Model 01 colour G02



Model 01 colour G04



Model 01 colour G08

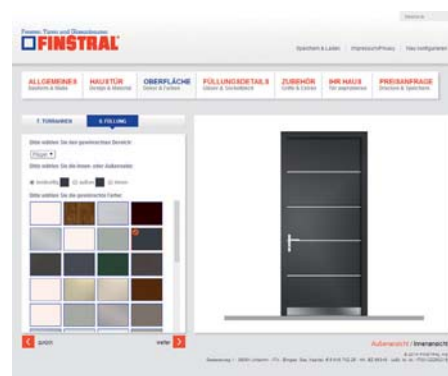
Our Vetro models are characterised by their glossy accents and maximum formal rigour. The high-quality enamelled external safety glass, available in nine colours, reflects its surroundings and emphasises the door's function as an object where encounters and exchanges take place.

There is a choice of clear glass, satin-finished glass or enamelled glass for the lateral elements or fanlights. The surface of the toughened Vetro glass is particularly easy to clean.



Model 01 Internal view

Our online door configurator



FINSTRAL AG

Gastererweg 1
39054 Unterinn/Ritten (BZ)
ITALY
T +39 0471 296611
F +39 0471 359086
finstral@finstral.com
www.finstral.com



www.finstral.com